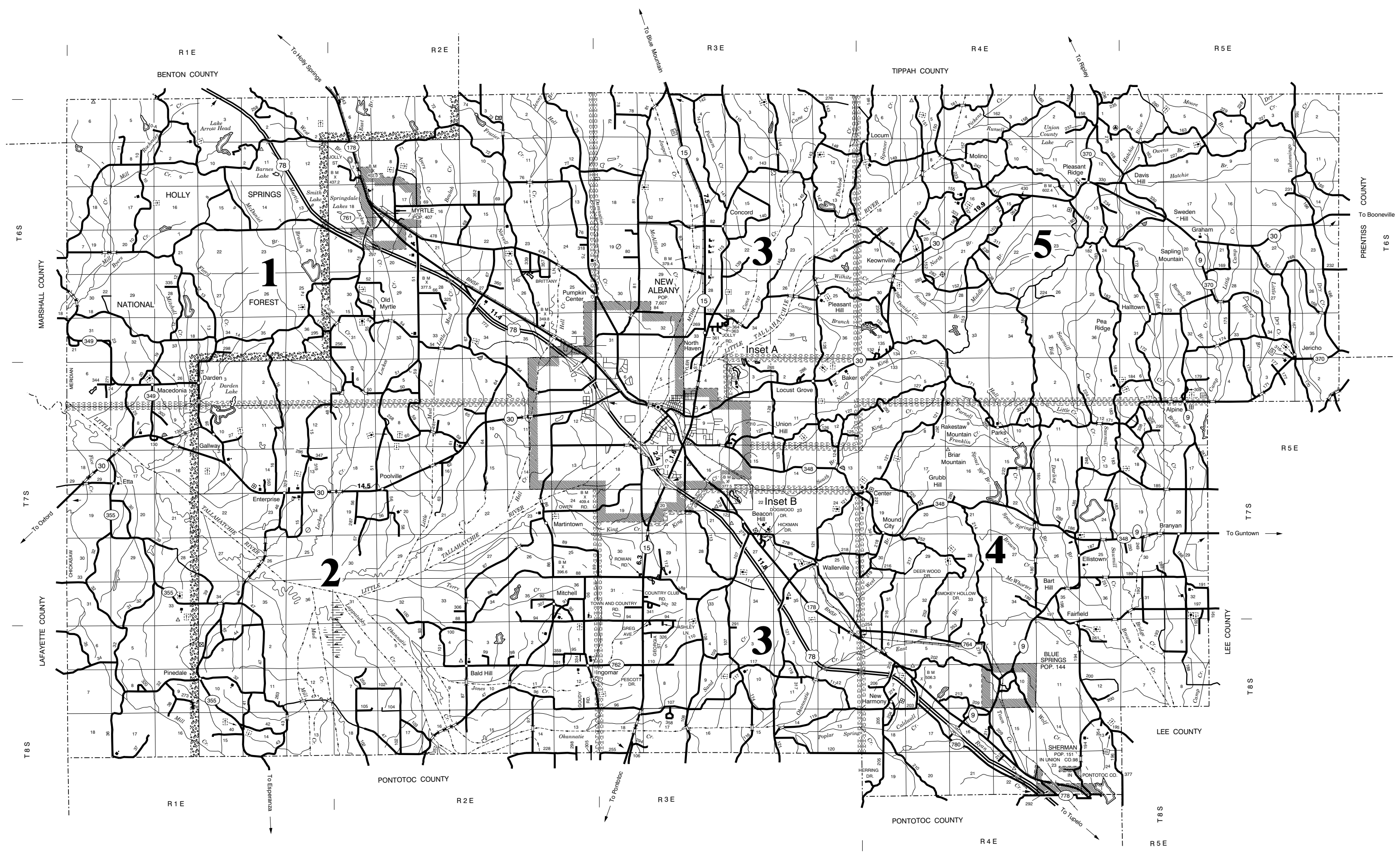
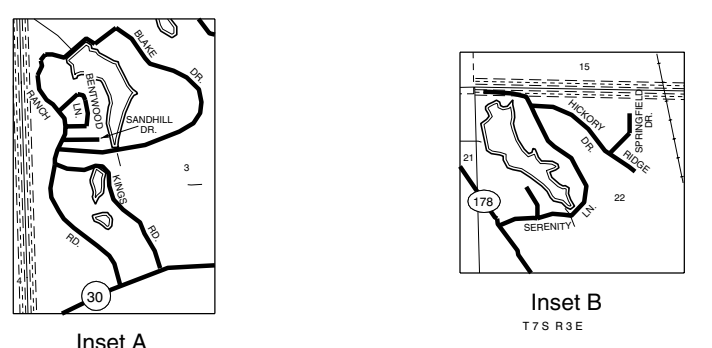


UNION ROAD INDEX

1	82	174	88
2	82	175	88
3	82	176	88
4	82	177	88
5	82	178	88
6	82	179	88
7	82	180	88
8	82	181	88
9	82	182	88
10	82	183	88
11	82	184	88
12	82	185	88
13	82	186	88
14	82	187	88
15	82	188	88
16	82	189	88
17	82	190	88
18	82	191	88
19	82	192	88
20	82	193	88
21	82	194	88
22	82	195	88
23	82	196	88
24	82	197	88
25	82	198	88
26	82	199	88
27	82	200	88
28	82	201	88
29	82	202	88
30	82	203	88
31	82	204	88
32	82	205	88
33	82	206	88
34	82	207	88
35	82	208	88
36	82	209	88
37	82	210	88
38	82	211	88
39	82	212	88
40	82	213	88
41	82	214	88
42	82	215	88
43	82	216	88
44	82	217	88
45	82	218	88
46	82	219	88
47	82	220	88
48	82	221	88
49	82	222	88
50	82	223	88
51	82	224	88
52	82	225	88
53	82	226	88
54	82	227	88
55	82	228	88
56	82	229	88
57	82	230	88
58	82	231	88
59	82	232	88
60	82	233	88
61	82	234	88
62	82	235	88
63	82	236	88
64	82	237	88
65	82	238	88
66	82	239	88
67	82	240	88
68	82	241	88
69	82	242	88
70	82	243	88
71	82	244	88
72	82	245	88
73	82	246	88
74	82	247	88
75	82	248	88
76	82	249	88
77	82	250	88
78	82	251	88
79	82	252	88
80	82	253	88
81	82	254	88
82	82	255	88
83	82	256	88
84	82	257	88
85	82	258	88
86	82	259	88
87	82	260	88
88	82	261	88
89	82	262	88
90	82	263	88
91	82	264	88
92	82	265	88
93	82	266	88
94	82	267	88
95	82	268	88
96	82	269	88
97	82	270	88
98	82	271	88
99	82	272	88
100	82	273	88
101	82	274	88
102	82	275	88
103	82	276	88
104	82	277	88
105	82	278	88
106	82	279	88
107	82	280	88
108	82	281	88
109	82	282	88
110	82	283	88
111	82	284	88
112	82	285	88
113	82	286	88
114	82	287	88
115	82	288	88
116	82	289	88
117	82	290	88
118	82	291	88
119	82	292	88
120	82	293	88
121	82	294	88
122	82	295	88
123	82	296	88
124	82	297	88
125	82	298	88
126	82	299	88
127	82	300	88
128	82	301	88
129	82	302	88
130	82	303	88
131	82	304	88
132	82	305	88
133	82	306	88
134	82	307	88
135	82	308	88
136	82	309	88
137	82	310	88
138	82	311	88
139	82	312	88
140	82	313	88
141	82	314	88
142	82	315	88
143	82	316	88
144	82	317	88
145	82	318	88
146	82	319	88
147	82	320	88
148	82	321	88
149	82	322	88
150	82	323	88
151	82	324	88
152	82	325	88
153	82	326	88
154	82	327	88
155	82	328	88
156	82	329	88
157	82	330	88
158	82	331	88
159	82	332	88
160	82	333	88
161	82	334	88
162	82	335	88
163	82	336	88
164	82	337	88
165	82	338	88
166	82	339	88
167	82	340	88
168	82	341	88
169	82	342	88
170	82	343	88
171	82	344	88
172	82	345	88
173	82	346	88
174	82	347	88
175	82	348	88
176	82	349	88
177	82	350	88
178	82	351	88
179	82	352	88
180	82	353	88
181	82	354	88
182	82	355	88
183	82	356	88
184	82	357	88
185	82	358	88
186	82	359	88
187	82	360	88
188	82	361	88
189	82	362	88
190	82	363	88
191	82	364	88
192	82	365	88
193	82	366	88
194	82	367	88
195	82	368	88
196	82	369	88
197	82	370	88
198	82	371	88
199	82	372	88
200	82	373	88



**LEGEND**

ROADS AND ROADWAY FEATURES

UNIMPROVED ROAD	---	OBSERVATION OR LOOKOUT TOWER	⊙
GRAVEL	---	HIGHWAY GARAGE	⊙
PAVED ROAD	---	POST OFFICE	⊙
UNIMPROVED HIGHWAY	---	POWER PLANT	⊙
DIVIDED HIGHWAY	---	WEIGHT STATION	⊙
INTERSTATE SYSTEM	---	HOSPITAL	⊙
CITY STREETS	---	SEWAGE DISPOSAL PLANT	⊙
		COMMUNITY CENTER OR TOWNHALL	⊙
		NATIONAL PARK GARAGE	⊙
		PUBLIC LIBRARY	⊙
		SANITARY LANDFILL	⊙
		CORRECTIONAL INSTITUTION	⊙
		POLICE STATION	⊙
		GRANARY	⊙
		REST AREA	⊙

HIGHWAY BRIDGES

BRIDGE 30 FEET AND OVER	---
DRAWBRIDGE	---
FERRY (FREE OR TOLL)	---
HIGHWAY GRADE SEPARATION	---
HIGHWAY INTERCHANGE	---

ROAD SYSTEM DESIGNATION

INTERSTATE NUMBERED	(I-20)
U.S. NUMBERED	(80)
STATE NUMBERED	(11, 483)

RAILROADS

RAILROAD STATION	---
RAILROAD CROSSING	---
RAILROAD ABOVE	---
RAILROAD BELOW	---

AIRPORTS

MILITARY AIRPORT	⊙
AIRPORT LIMITED FACILITIES	⊙
LANDING AREA OR STRIP (INCLUDING PRIVATE AIR FIELDS)	⊙
AIRPORT COMPLETE FACILITIES	⊙
AIRWAY LIGHT BEACON	⊙

BOUNDARIES

STATE BOUNDARY	---
COUNTY BOUNDARY	---
BEAT LINE	---
CONGRESSIONAL TOWNSHIP	---
SECTION LINE	---
NATIONAL OR STATE FOREST	---
RESERVATION, PARKS, ETC.	---
URBAN AREA COMPACT	---
INCORPORATED PLACES	---
UNINCORPORATED DELIMITED AREAS	---

CONSERVATION AND RECREATION

MOTEL OR HOTEL	⊙
CAMP OR LODGE	⊙
HISTORIC OR SCENIC SITE	⊙
FAIR GROUNDS OR RACE COURSE	⊙
SMALL PARK	⊙
GOLF COURSE OR COUNTRY CLUB	⊙

INDUSTRIAL

FACTORY OR INDUSTRY	⊙
SEASONAL INDUSTRY	⊙

CHURCHES AND CEMETERIES

CHURCH	⊙
CEMETERY	⊙
CHURCH WITH CEMETERY ADJACENT	⊙

EDUCATION

SCHOOL	⊙
--------	---

MISCELLANEOUS STRUCTURES

ARMORY	⊙
FORT, ARMY CAMP	⊙

NAVIGATION

DOCK, PIER, OR LANDING	⊙
LEVEE OR DIKE	---
LEVEE OR DIKE WITH ROAD	---

CITY AND VILLAGE CENTERS

COUNTY SEAT	⊙
OTHER CITIES AND VILLAGES	⊙

MISCELLANEOUS

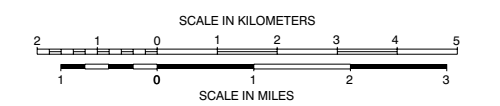
TRIANGULATION STATION	⊙
BENCH MARK WITH ELEVATION	⊙

GENERAL HIGHWAY MAP  
**UNION COUNTY**  
 MISSISSIPPI  
 © 2009

MISSISSIPPI DEPARTMENT OF TRANSPORTATION  
 PLANNING DIVISION  
 IN COOPERATION WITH THE  
 U.S. DEPARTMENT OF TRANSPORTATION  
 FEDERAL HIGHWAY ADMINISTRATION  
 TRANSVERSE MERCATOR PROJECTION,  
 STATE PLANE COORDINATE SYSTEM 1983

**DATA SOURCES**

2006 ASCS AERIAL PHOTOS
1997 USGS DLG
2007 MDOT FIELD INVENTORY
2000 POPULATION 25,362
2002 BEAT LINES



MISSISSIPPI DEPARTMENT OF TRANSPORTATION  
 CONSISTENT LICENSE AGREEMENT

With the purchase of this map, the Mississippi Department of Transportation grants you the right to use the copyrighted map as set forth below.

The map is owned by the Mississippi Department of Transportation and is protected by the United States copyright laws and other applicable laws. You are required to file the map with any other copyright material except that you may copy the map in whole or in part without modification, without the notice of copyright by the Mississippi Department of Transportation is displayed in a prominent visible location on each copy.

You have a right-free right to reproduce and distribute the copyrighted map in whole or in part, without modification, provided the Mississippi Department of Transportation copyright notice is displayed in a prominent visible location on each reproduction.

Any modification of a map with this agreement and without your license to use, copy, and distribute the map. Use of modified maps is strictly prohibited and is subject to prosecution under State and Federal laws.

This agreement is governed by the laws of the State of Mississippi, U.S. Federal Law and U.S. International Treaties.

Should you have any questions concerning the agreement, please write: Mississippi Department of Transportation, Planning Division, Post Office Box 1800, Jackson, Mississippi 39201-1800.

