

LEGEND

ROADS AND ROADWAY FEATURES

- UNIMPROVED ROAD
- PAVED ROAD
- DIVIDED HIGHWAY
- INTERSTATE SYSTEM
- CITY STREETS

HIGHWAY BRIDGES

- BRIDGE 50 FEET AND OVER
- DRYWATER
- HIGHWAY GATE SEPARATION
- HIGHWAY INTERCHANGE

ROAD SYSTEM DESIGNATION

- INTERSTATE NUMBERED
- U.S. NUMBERED
- STATE NUMBERED

RAILROADS

- RAILROAD STATION
- RAILROAD ABOVE
- RAILROAD BELOW

AIRPORTS

- MILITARY AIRPORT
- AIRPORT LIMITED FACILITIES
- LANDING AREA OR STRIP
- AIRPORT COMPLETE FACILITIES
- AIRWAY LIGHT BEACON

BOUNDARIES

- STATE BOUNDARY
- COUNTY BOUNDARY
- PUBLIC LINE
- CONGRESSIONAL TOWNSHIP
- SECTION LINE
- NATIONAL OR STATE FOREST
- RESERVATION, PARKS, ETC.
- URBAN AREA COMPACT
- INCORPORATED PLACES
- UNINCORPORATED DELIMITED AREAS

NAVIGATION

- DOCK, PIER OR LANDING
- LENS OR DIKE WITH ROAD
- LENS OR DIKE WITH ROAD

CITY AND VILLAGE CENTERS

- COUNTY SEAT
- OTHER CITIES AND VILLAGES

MISCELLANEOUS

- TRIANGULATION STATION
- BENCH MARK WITH ELEVATION

PUBLIC SERVICE FACILITIES

- OBSERVATION OR LOOKOUT TOWER
- HIGHWAY GARAGE
- POST OFFICE
- POWER PLANT
- WEIGHT STATION
- SEWAGE DISPOSAL PLANT
- COMMUNITY CENTER OR TOWNHALL
- NATIONAL PARK GARAGE
- FIRE STATION
- POLICE STATION
- SANITARY LAND FILL
- CORRECTIONAL INSTITUTION
- GRAVEL PIT
- REST AREA

CONSERVATION AND RECREATION

- MOTEL OR HOTEL
- CAMP OR LODGE
- HISTORIC OR SCENIC SITE
- FAIR GROUNDS OR RACE COURSE
- SMALL PARK
- GOLF COURSE OR COUNTRY CLUB

INDUSTRIAL

- FACTORY OR INDUSTRY
- SEASONAL INDUSTRY

CHURCHES AND CEMETERIES

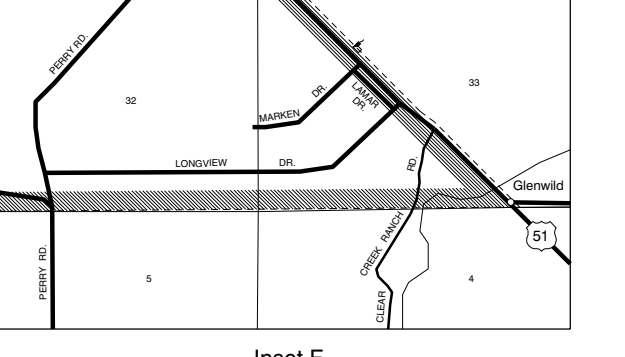
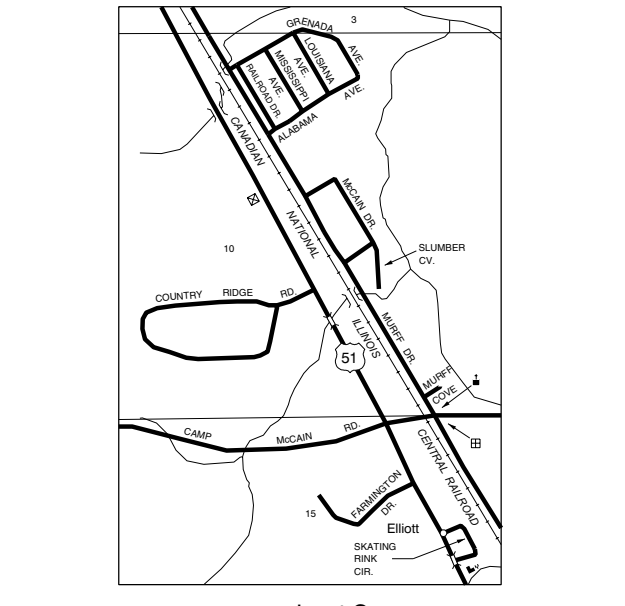
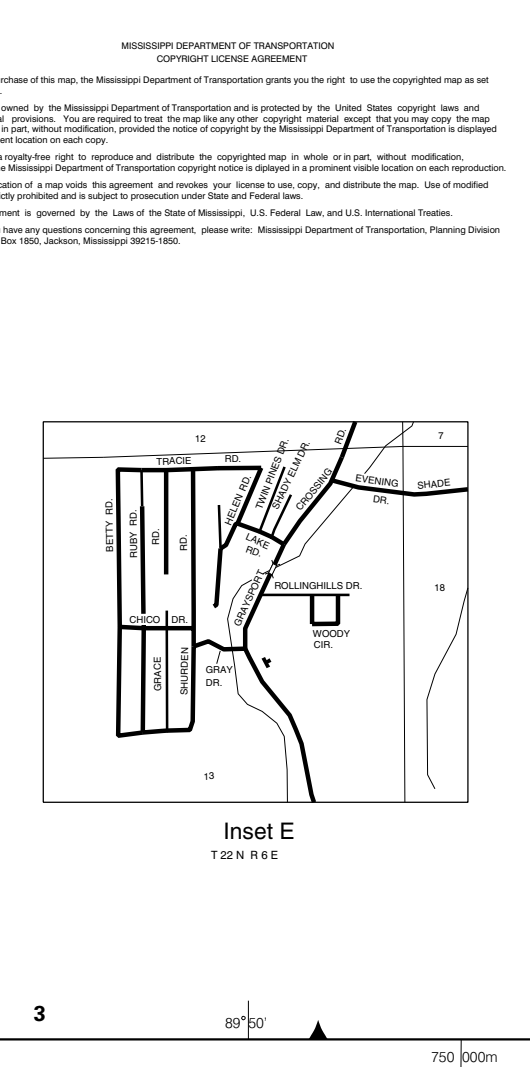
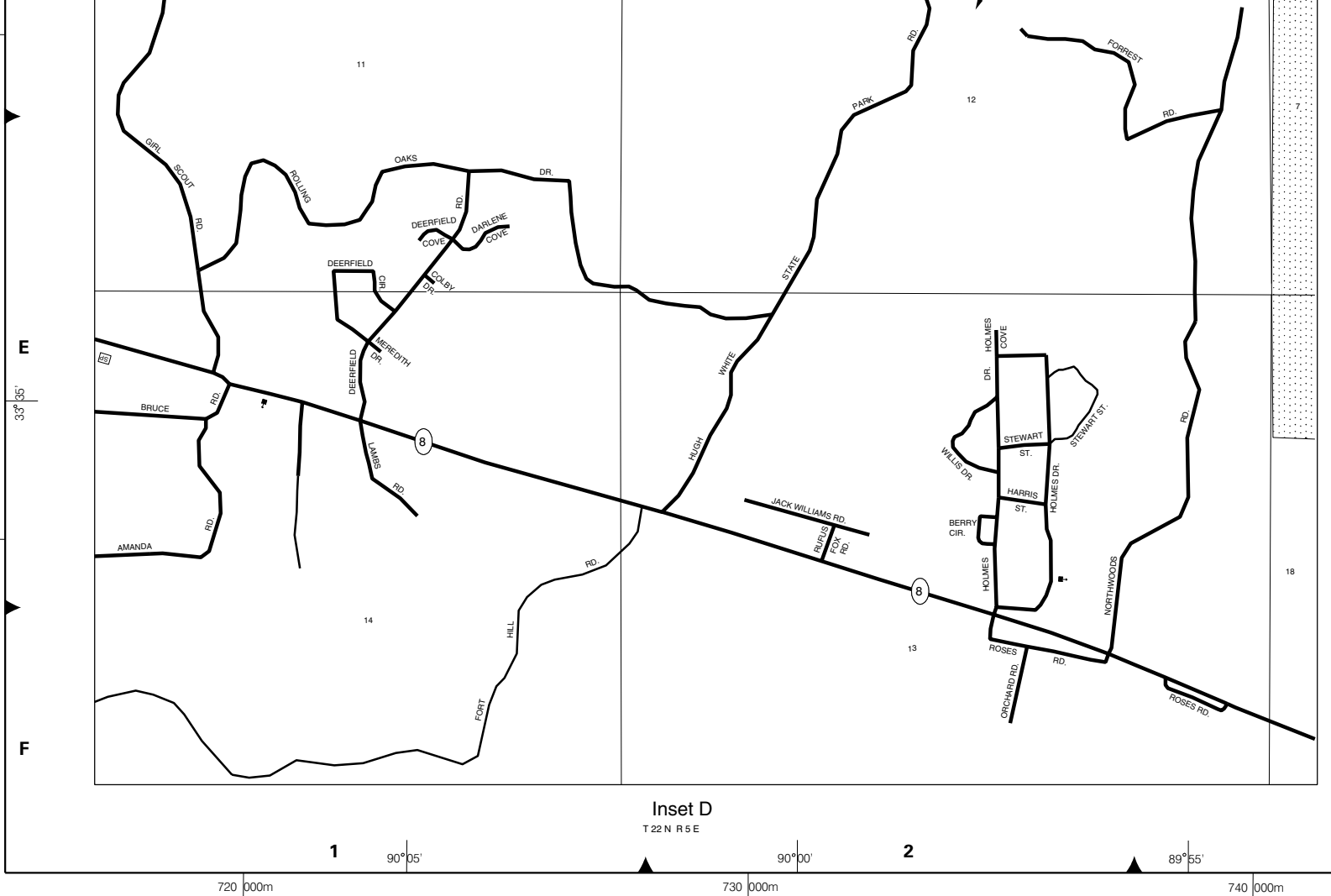
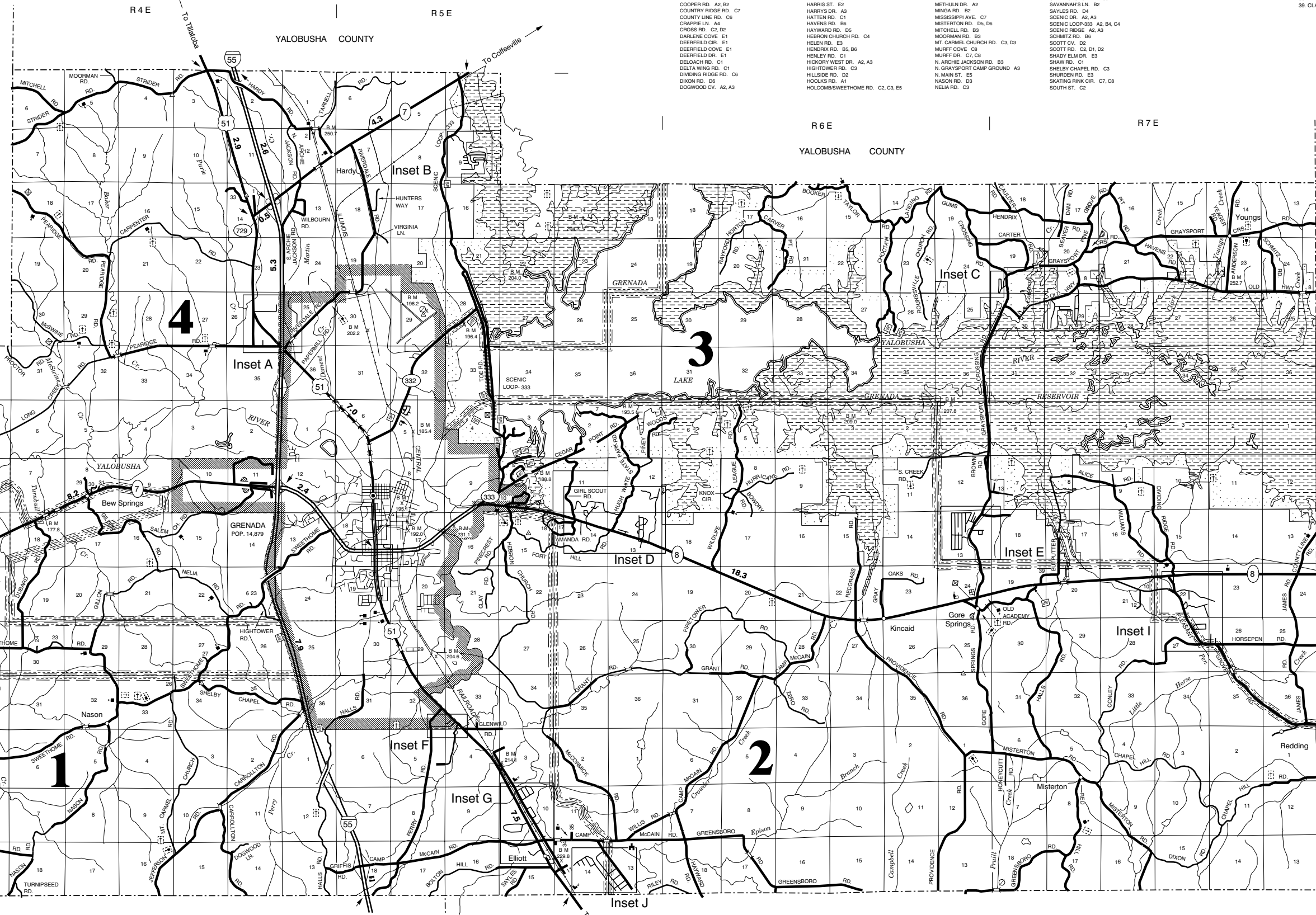
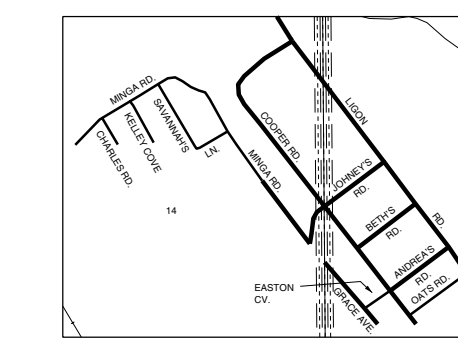
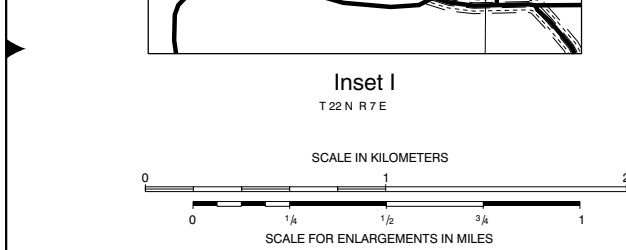
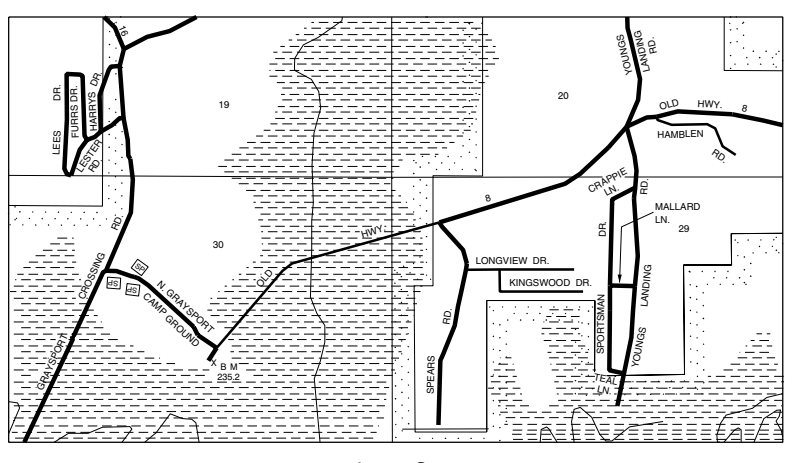
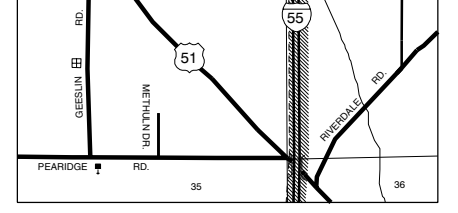
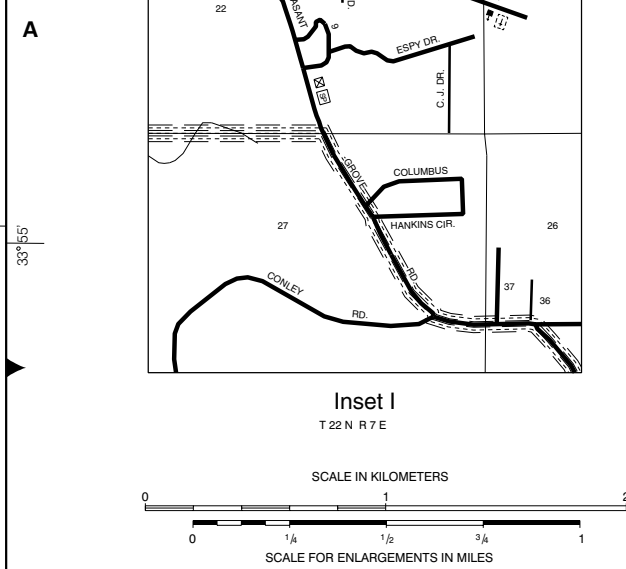
- CHURCH
- CEMETERY
- CHURCH WITH CEMETERY ADJACENT

EDUCATION

- SCHOOL

MISCELLANEOUS STRUCTURES

- ARMORY
- FORT, ARMY CAMP



GENERAL HIGHWAY MAP

GRENADA COUNTY

MISSISSIPPI
© 2005

MISSISSIPPI DEPARTMENT OF TRANSPORTATION
PLANNING DIVISION

IN COOPERATION WITH THE
U.S. DEPARTMENT OF TRANSPORTATION
FEDERAL HIGHWAY ADMINISTRATION

TRANSVERSE MERCATOR PROJECTION,
STATE PLANE COORDINATE SYSTEM 1983

DATA SOURCES

- 1996 ASCS AERIAL PHOTOS
- 1987 USGS DLG
- 2001 MDOT FIELD INVENTORY
- 2000 POPULATION 23,263
- 2004 BEAT LINES

SCALE IN KILOMETERS
SCALE IN MILES

THE MAP WAS COMPUTER GENERATED